



## St. Edmund's R.C. Primary School - Newsletter

31<sup>st</sup> January 2025

Tel: 0161-205-1700

Weekend Masses: Vigil Mass - Saturday, 6.30 p.m. at St. Malachy's

9:30 a.m. and 11:30 a.m. (signed for the deaf) at St. Patrick's

Parish Website: <https://stpatricksliveseyst.yolasite.com/>

School Website: [www.stedmundsrcprimaryschool.co.uk](http://www.stedmundsrcprimaryschool.co.uk)

Facebook page: [St. Edmund's Roman Catholic Primary School](https://www.facebook.com/St.EdmundsRomanCatholicPrimarySchool)



DIOCESE OF SALFORD



### WEEKEND MASSES - Come to the table, everyone is welcome!

If there is any parent who wishes their child to be baptised, please contact the Parish Priest of the parish in which you live. If you live within the boundaries of this parish, please see Father Paul after one of the weekend Masses listed above. Alternatively, Father Paul can be contacted on 07764791889 or at [paul.daly@dioceseofsalford.org.uk](mailto:paul.daly@dioceseofsalford.org.uk)

### **Our Statement to live by next week is:**

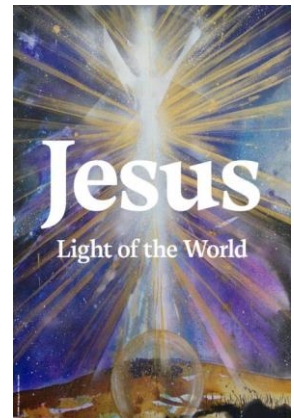
**'I try to appreciate the beauty & wonder in the world around me.'**

**HOPE:** In this Sunday's Gospel, we read about Simeon who joyfully recognised Jesus as the 'Light of the World' - the one who fills our lives with hope. Hope is a virtue which can strengthen and sustain us through life's greatest difficulties. Putting our hope in God is trying to live and do our best in the present moment, and then trust the future to God. Simeon is a great example of someone who placed his hope in God and was blessed by encountering Jesus, the 'Light of the World'. We too can be blessed and enlightened when we do the same. As part of our celebrations for this Jubilee Year of Hope, enjoy exploring this Sunday's Gospel and this week's word, which is HOPE.

*Coming to church will help your family learn about Jesus as our 'Light of the World.' Learn more about this Sunday's Gospel by joining us at St. Patrick's or St. Malachy's at the above Masses. Alternatively there are other local churches with other Masses available: all are very warmly invited.*

*"Always know in your heart that God is by your side.  
Let us never lose hope!" (Pope Francis)*

**JUBILEE YEAR - PILGRIMS OF HOPE:** We aim to keep you updated with various activities which are going on in school for this celebratory year. Our first invitation to children is a diocesan wide colouring competition. We will be posting more information on our facebook page but if you would to enter, please speak to your teacher or Miss Campbell.



**SACRAMENTAL PROGRAMME:** Bringing your family to Mass each week could be a great way to show your child how to be a pilgrim of hope. They are very welcome to join 'little church' either Saturday evening or Sunday morning. The next two dates for your diary are: Monday, 24<sup>th</sup> February 2025, 3.30 or 5.00 p.m. Sunday, 2<sup>nd</sup> March 2025, 9.15 a.m. Mass 'We are people who follow Jesus.' Please ensure you make arrangements to attend the meeting and Mass.

## ATTENDANCE AND PUNCTUALITY MATTERS:

Last week was a disaster!! Never have we had so many classes well below our school target. Congratulations to Year 3 who, yet again, smashed through the 97% barrier. They're well on their way to winning the ice-cream party unless another class can stop them!!! Let's hope our children are having better health now. Lots of sleep and good wholesome food will keep them fit and strong.



Nursery: 83.4%	Reception: 91.9%	Year 1: 93.7%	Year 2: 88.6%
Year 3: 98.7%	Year 4: 95.4%	Year 5: 90.6%	Year 6: 86.6%
WHOLE SCHOOL: 91.3%			

**TOP TIPS FOR ATTENDANCE:** Get uniform, bags, P.E. kits, lunchboxes ready the night before. Help your child to get organised in good time. Help them to become an attendance HERO (Here, Every day, Ready and On time).



**PUNCTUALITY:** Can we remind parents that our gates open to pupils at 8.40 a.m. until 8.50 a.m. and children are expected to be in class and ready for registration at this time. Please work with us so that your child isn't late for learning!



In addition, just a reminder for parents/carers, our learning is timetabled until 3:15 p.m. so classes will not be dismissed until after this time. It does take some time for our children to get organised with all of their belongings. We also want to ensure that our children are handed over to the correct person safely. Thank you for your patience and understanding in this matter.

**PARENTS' EVENING:** Parents who have children in Nursery, Reception, Year 1 & 2 will have the opportunity to come and meet their teacher and look at their child's work on Tuesday, 11<sup>th</sup> February from 3.30 p.m - 5.00 p.m. Come along and the teachers will slot you in - first come, first served.



**EDUCATIONAL VISITS:** We all know our children love going out on excursions and we have two coming up. Year 6 are off to visit the air raid shelters in Stockport for their WWII history curriculum. Year 2 will be visiting Quarry Bank Mill also for their history learning.

**READING TOP TIP:** Our top tip this week is: **PLAY WITH LETTERS, SOUNDS AND WORDS!** Engage your child in games and activities that help them learn new words. For older children, these could be crossword puzzles, word searches or word hunts. Have you ever played 'Wordle' online? ...it's brilliant!! For younger children, focus on playing with letters and sounds. You can use Play-Doh or alphabet magnets. All of these activities build your child's vocabulary and understanding of how words work. This will help them understand words when reading books, making reading easier and more enjoyable!



**BASKETBALL TICKETS:** Returning to Manchester the Great Britain women's team take on Estonia in what is set to be an exciting home game for the National Team. As part of the FIBA women's EuroBasket qualifier window the teams are set to go head to head and every point counts! With unreserved seating you can get closer to the action than ever. GB Basketball are offering a 30% discount code for Manchester schools meaning children's tickets are available from £3.50. The discount can be accessed by adding **MCRCOMMUNITY30** at checkout.

**Venue:** National Basketball Performance Center, Kirkmanshulme Ln, M12 4TF

**Date:** Thursday, 6<sup>th</sup> February

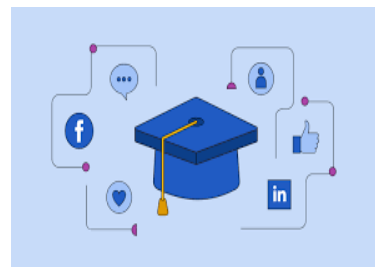
**Doors Open:** 6.30 p.m.

**Tip Off:** 7.30 p.m.

**Booking Link:** <https://www.universe.com/events/fiba-women-eurobasket-qualifiers-great-britain-v-estonia-tickets-F90JTZ?ref=MCRActive>

**ONLINE-SAFETY TOP TIP:** Our top tip this week is: **HELP YOUR CHILD TO THINK CRITICALLY WHEN THEY'RE ONLINE.** Remind your child that not everything that they read or see on the web is true, and not everyone online tells the truth. More than ever, internet users are required to wade through a lot of noise, distractions, and opinions that flow freely online. Children need guidance to learn this skill. The following link is really useful and it is called "Five Tips for Teaching Students How to Research and Filter Information."

<https://www.kathleenamorris.com/2018/02/23/research-filter/>



**FSM VOUCHERS:** Manchester City Council has again approved funding for supermarket vouchers for the February half term break to help with the financial pressures that many of our families will face. Families with children eligible for free school meals (FSM) will receive a £15.00 e-voucher from Wonde on Wednesday, 12<sup>th</sup> February. This voucher can be redeemed at a supermarket of your choice.

**FREE  
SCHOOL  
MEALS**  
Information & Support



**DINNER MONEY:** For those parents who pay for school meals, please remember that dinner money needs to be paid in **advance** by Monday morning on School Gateway. Any accounts with arrears need to be cleared before the half term break. If you are struggling to pay, please speak to the school office and a payment plan can be arranged. If arrears are not cleared your child will need to have packed lunches until they are.

**NURSERY PLACES FOR JANUARY:** Are you looking for a nursery place or know someone who is? Is their date of birth on or before 31.03.2022? If so, we have places within our nursery available for your child to start in April! For more information about the admissions process please call in at the school office.



**FACEBOOK:** If you aren't doing so already, please 'like' our page on Facebook so you can keep up to date with all of the latest news! Teachers will be posting about what the class are up to during the week and they'll post photos also! Search us as **St. Edmund's Manchester** and we should pop up.

**SPECIAL PRAYERS:** Please remember the following people in your prayers this week: Julie Anne Fotsodap (RIP) and family, Carol Parkes (RIP) and family, Jo Phillips and family, all involved with caring for the sick of our community, Caritas, our families on the Sacramental Programme those families seeking asylum from war torn countries, Father Paul, Father Anthony, the Presentation Sisters, the Missionary Brothers of Charity, our children and staff and all other private intentions at this time.



**BEDTIME PRAYER:** Dear Lord Jesus, thank you for the hope and light you bring to our lives. Please help us to bring light and hope to others too. Amen

*Stay with us, Lord... on our journey.*

*Guide us on our journey  
as pilgrims of hope.*

